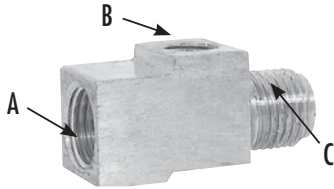


TUBING & TUBE FITTINGS

BRAKE LINES & FITTINGS

FRACTIONAL BRAKE FITTINGS

TOWED TRAILER BRAKE TEE FOR BRAKE FITTINGS



RUN TEE

PART No.	CROSS REF.	INVERTED SEAT		MALE THREAD	QTY.
		A	B	C	
91420	7900	3/16 (3/8-24)	3/16 (3/8-24)	3/16 inv. (3/8-24)	5
91422	7933	3/16 (9/16-18)	3/16 (3/8-24)	3/16 inv. (9/16-18)	5
91424	7914	3/16 (7/16-24)	3/16 (3/8-24)	1/4 inv. (7/16-24)	5
91427	7901	1/4 (7/16-24)	3/16 (3/8-24)	1/4 inv. (7/16-24)	5
91428	7904	1/4 (9/16-18)	3/16 (3/8-24)	1/4 inv. (9/16-18)	5
91421	7906	3/16 (1/2-20)	3/16 (3/8-24)	1/2-20 inv.	5

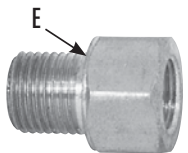
DUAL MASTER CYLINDER BRAKE FITTING ADAPTERS

- Adapters can be used to adapt standard steel brake lines to the different size ports used in dual master cylinders.
- Thread size can be determined by measuring with a fractional or metric screw pitch gauge.



MALE CONNECTOR

PART No.	CROSS REF.	INVERTED MALE THREAD	INVERTED FEMALE THREAD	QTY.
90160	1441	3/16	3/16	5
90161	7897	5/16	3/16	5

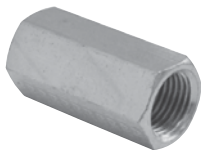


MALE CONNECTOR

PART No.	CROSS REF.	INVERTED MALE THREAD	INVERTED FEMALE THREAD	QTY.
90162	7911	3/16 (9/16-18)	3/16 (3/8-24)	5
90163-1	7913	3/16 (9/16-18)	3/16 (1/2-20)	5
90163	7910	3/16 (9/16-20)	3/16 (3/8-24)	5
90164	7828	3/16 (3/8-24)	1/4 (7/16-24)	5
90165	7818	1/4 (7/16-24)	3/16 (3/8-24)	5
90166 ★	7732	1/4 (7/16-20)	1/4 (7/16-24)	5
90171	7908	1/4 (9/16-18)	1/4	5
90170	7909	5/16 (1/2-20)	3/16 (3/8-24)	5
90173	7829	5/16 (1/2-20)	1/4 (7/16-24)	5

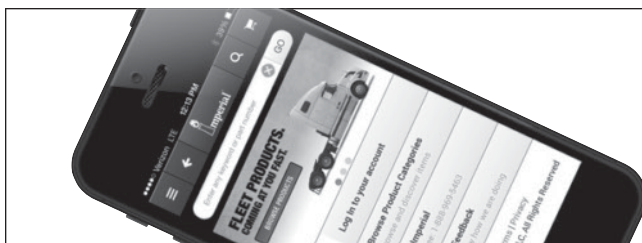
★ Seals on hex face (E).

BRAKE LINE UNIONS FOR DOMESTIC AND IMPORTED VEHICLES



UNION

PART No.	CROSS REF.	THREAD	DESCRIPTION	QTY.
91429	7941	10-1.0 mm	European to European line, Bubble Flare, 'SC' Series, Steel	1



Download the Imperial App today.



PERSONAL CUSTOMER SERVICE / SAME DAY SHIPPING / NO RISK GUARANTEE