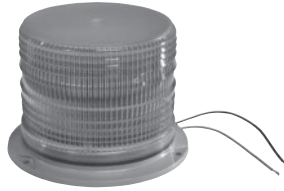


## STROBE LIGHTS

### CLASS II

#### IMPERIAL® AMBER STROBE LIGHT

- Field selectable flash rate allows you to choose double or quad flash patterns.
- Medium and high intensity flash output.
- Base material: Aluminum
- SAE J1318 Class II.
- Specifications:
  - » Joules Double Flash: 8/13 (medium/high intensity)
  - » Joules Quad Flash: 12/17 (medium/high intensity)
  - » Amps: 3.2



PART No.	DESCRIPTION	VOLTAGE	SIZE	FLASH RATE	QTY.
82400	Amber Strobe Light	12-24	6.4" W x 4.5" H	130/260/Min.	1

#### ECCO® MEDIUM PROFILE STROBE

- Chose single or double flash pattern at time of installation.
- Features easy and convenient J-bolt mount.
- Easy repair.
- Height: 5.7"
- Base Diameter: 6.7"
- Use with Replacement Flash Tube, Part No. 81593
- SAE J1318 Class II.



PART No.	CROSS REF.	DESCRIPTION	VOLTAGE	FLASH RATE	QTY.
81891	6530A	Strobe Lamp	12-48	80/Min.	1
81893	551HD	Replacement Bulb	—	—	1

#### AMBER LED STROBE LIGHT

- Field selectable flash rate allows you to choose double or quad flash patterns.
- Universal flange mount, polycarbonate base.
- Strobe light replacement tube, Part No. 82074.
- SAE J1318 Class II.
- Specifications:
  - » Weight: 2 lbs
  - » Joules: 7 or 10
  - » Amps: 1.2



PART No.	CROSS REF.	COLOR	HEIGHT	BASE DIA.	VOLTS	QTY.
80830	255TS	Amber	4-3/4"	6-13/32"	12-48	1

#### ECCO® MEDIUM PROFILE STROBE

- Circuit board is epoxy resin encapsulated for protection against moisture, dust and vibration.
- Features Ecco's patented i.beam® flash technology to monitor circuit board and flashtube operation.
- SAE J1318 Class II
- 12-24 volt.
- Temperature Range: -22° F to 122° F
- Color: Amber
- Use with Replacement Flash Tube, Part No. 81593
- Specifications:
  - » Amps: 2.6
- Two year manufacturer's warranty



PART No.	CROSS REF.	DESCRIPTION	HEIGHT	BASE DIA.	QTY.
82428	6770A	Amber MED Strobe	6.7"	6.5"	1

#### ECCO® STROBE LIGHTS

- Field selectable flash rate allows you to choose double or quad flash patterns.
- Medium or high intensity flash output.
- Temperature range: -22° F to 122° F
- 12 V - 24 V.
- 8 or 13 joules.
- 2.1 amps.
- SAE J1318 Class II.
- 1" female opening.



PART No.	CROSS REF.	DESCRIPTION	HEIGHT	BASE DIA.	QTY.
81590	6650	Amber Strobe	4.8"	6.5"	1
81591	6670	Amber Strobe	6.7"	6.5"	1
81597	6670	White Strobe	6.7"	6.5"	1
81593	—	Flash Tube	—	—	1

#### ECCO® STROBE LAMP ACCESSORIES

- Fits strobe lamps, Part Nos. 81591 and 81597.

PART No.	CROSS REF.	DESCRIPTION	QTY.
81587	A6600MK	Magnetic Base	1
81592	A6070BG	Branch Guard	1



#### ECCO® LOW PROFILE STROBE AMBER, VACUUM BASE

- Glass filled nylon base.
- Vacuum magnet base.
- Cigarette plug with on/off switch.
- SAE J1318 Class II
- 12-48 volt.
- Temperature Range: -22° F to 122° F
- Cord length: 14 ft 6 in
- Use with Replacement Flash Tube, Part No. 81593
- Specifications:
  - » Joules: 7
  - » Amps: 1.5
- Two year manufacturer's warranty



PART No.	CROSS REF.	DESCRIPTION	HEIGHT	BASE DIA.	QTY.
82426	6570A-VM	Amber Strobe Base	4.8"	6.5"	1

#### ECCO® MEDIUM PROFILE STROBE

- Vacuum magnet base.
- Glass filled nylon base.
- Joules: 7
- Amps: 1.5
- Temperature Range: -22° F to 122° F
- SAE J1318 Class II.



PART No.	CROSS REF.	DESCRIPTION	VOLTS	SIZE	FLASH RATE	QTY.
82012	6570A-VM	Amber	12V DC	6.5" W x 6.7" H	80/Min.	1

#### ECCO® MEDIUM PROFILE STROBE

- Glass filled nylon base.
- Joules: 7
- Amps: 1.5
- Temperature Range: -22° F to 122° F
- SAE J1318 Class II.
- Color: Amber



PART No.	CROSS REF.	DESCRIPTION	SIZE	VOLTS	FLASH RATE	QTY.
82072	6570A-A	Strobe Lamp	6.5" W x 6.7" H	12V DC	80/Min.	1
81593	—	Flash Tube	6.5" W x 6.7" H	—	—	1