

AIR BRAKE PRODUCTS

(DOT APPROVED) AIR BRAKE FITTINGS FOR NYLON TUBING

DOT AIR BRAKE FITTINGS FOR NYLON TUBING

- Advantages: low cost, many styles available, no flare required, easy to assemble
- Exceeds DOT pressure requirements for air brake systems.
- Use with SAE J844 Type A or B nylon tubing.
- Meets FM VSS 571.106 requirements.
- Material: Brass
- Primary applications: air brake systems, air controls and gauge lines
- **DOT Approved**



Tube O.D.	5/32	1/4	3/8	1/2	5/8	3/4
Thread Size	5/16-24	7/16-24	17/32-24	11/16-20	13/16-18	1"-18

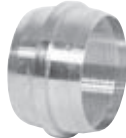
Note: Fittings are shipped with nuts, sleeves, and inserts pre-assembled and ready to slip onto tubing.

SPLIT SLEEVE (FERRULE)



PART No.	CROSS REFERENCE	TUBE O.D.	PIPE THREAD	QTY.
90791	1460x532	5/32	—	25

SLEEVE (FERRULE)



PART No.	CROSS REFERENCE	TUBE O.D.	PIPE THREAD	QTY.
90709	1460x3	3/16	—	25
90650	1460x4	1/4	—	50
90651	1460x6	3/8	—	50
90652	1460x8	1/2	—	25
90653	1460x10	5/8	—	25
90654	1460x12	3/4	—	25

STAINLESS STEEL INSERT



PART No.	CROSS REFERENCE	TUBE O.D.	PIPE THREAD	QTY.
92329 ★	2030x2	1/8	—	100
92326	63NTAx3	3/16	—	100
90739	63NTAx4	1/4	—	50
90740	63NTAx6	3/8	—	50
90741	63NTAx 8	1/2	—	50
90742	63NTAx10	5/8	—	25
90743	63NTAx12	3/4	—	25

★ Brass

BRASS INSERT



PART No.	CROSS REFERENCE	TUBE O.D.	PIPE THREAD	QTY.
90725	1484x4	1/4	—	50
90726	1484x6	3/8	—	50
90727	1484x8	1/2	—	50
90728	1484x10	5/8	—	25

NUT



PART No.	CROSS REFERENCE	TUBE O.D.	PIPE THREAD	QTY.
90790	1461x532	5/32	—	10
90655	1461x4	1/4	—	20
90656	1461x6	3/8	—	20
90657	1461x8	1/2	—	10
90658	1461x10	5/8	—	10
90659	1461x12	3/4	—	10

UNION



PART No.	CROSS REFERENCE	TUBE O.D.	PIPE THREAD	QTY.
90792 ◆	1462x532	5/32	—	5
90660	1462x4	1/4	—	10
90661	1462x6	3/8	—	10
90662	1462x8	1/2	—	10
90663	1462x10	5/8	—	10
90664	1462x12	3/4	—	10

◆ Split Sleeve

G1



PERSONAL CUSTOMER SERVICE / SAME DAY SHIPPING / NO RISK GUARANTEE



AIR BRAKE PRODUCTS

(DOT APPROVED) AIR BRAKE FITTINGS FOR NYLON TUBING

UNION ELBOW



PART No.	CROSS REFERENCE	TUBE O.D.	PIPE THREAD	QTY.
90775	1465x4	1/4	—	5
90671	1465x6	3/8	—	5
90672	1465x8	1/2	—	5
90673	1465x10	5/8	—	5

FEMALE CONNECTOR



PART No.	CROSS REFERENCE	TUBE O.D.	PIPE THREAD	QTY.
90798	1466x4x4	1/4	1/8	5
90799	1466x4	1/4	1/4	5
90675	1466x6x2	3/8	1/8	5
90674	1466x6	3/8	1/4	5
90676	1466x6x6	3/8	3/8	5
90677	1466x8	1/2	3/8	5

BULKHEAD UNION



PART No.	CROSS REFERENCE	TUBE O.D.	PIPE THREAD	QTY.
90876	1474x4	1/4	—	10
90877	1474x6	3/8	—	10
90878	1474x8	1/2	—	2

G2

MALE CONNECTOR



PART No.	CROSS REFERENCE	TUBE O.D.	PIPE THREAD	QTY.
90793 ◆	1468x532x1	5/32	1/16	5
90794 ◆	1468x532x2	5/32	1/8	5
90680	1468x4	1/4	1/8	10
90681	1468x4x4	1/4	1/4	10
90735	1468x4x6	1/4	3/8	5
90683	1468x6x2	3/8	1/8	10
90682	1468x6	3/8	1/4	10
90684	1468x6x6	3/8	3/8	10
90685	1468x6x8	3/8	1/2	10
90687	1468x8x4	1/2	1/4	10
90686	1468x8	1/2	3/8	10
90688	1468x8x8	1/2	1/2	10
90736	1468x8x12	1/2	3/4	2
90690	1468x10x6	5/8	3/8	5
90689	1468x10	5/8	1/2	5
90737	1468x10x12	5/8	3/4	2
90691	1468x12	3/4	1/2	5
90692	1468x12x12	3/4	3/4	5

◆ Split Sleeve

Turn to page G10
for a variety of Nylon Tubing
in many sizes and colors.

90° MALE ELBOW



PART No.	CROSS REFERENCE	TUBE O.D.	PIPE THREAD	QTY.
90795 ◆	1469x532x2	5/32	1/8	5
90693	1469x4	1/4	1/8	10
90694	1469x4x4	1/4	1/4	10
90770	1469x4x6	1/4	3/8	5
90697	1469x6x2	3/8	1/8	10
90695	1469x6	3/8	1/4	10
90699	1469x6x6	3/8	3/8	10
90700	1469x6x8	3/8	1/2	10
90703	1469x8x4	1/2	1/4	10
90701	1469x8	1/2	3/8	10
90704	1469x8x8	1/2	1/2	10
90705	1469x10	5/8	1/2	5
90706	1469x10x6	5/8	3/8	5
90771	1469x10x12	5/8	3/4	1
90707	1469x12	3/4	1/2	2
90724	1469x12x12	3/4	3/4	2

◆ Split Sleeve

90° LONG MALE ELBOW

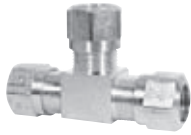


PART No.	CROSS REFERENCE	TUBE O.D.	PIPE THREAD	QTY.
90696	1469x6	1/4	1/4	10
90702	1469x8	3/8	3/8	10



(DOT APPROVED) AIR BRAKE FITTINGS FOR NYLON TUBING

UNION TEE



PART No.	CROSS REFERENCE	O.D. LEFT	O.D. RIGHT	O.D. CENTER	PIPE THREAD	QTY.
90679	1464x4	1/4	1/4	1/4	—	5
90667	1464x6x6x4	3/8	3/8	1/4	—	5
90666	1464x6	3/8	3/8	3/8	—	5
90670	1464x8x8x6	1/2	1/2	3/8	—	5
90669	1464x8	1/2	1/2	1/2	—	5
90642	1464x10	5/8	5/8	5/8	—	2

45° MALE ELBOW



PART No.	CROSS REFERENCE	TUBE DIA.	PIPE THREAD	QTY.
90729	1480x4	1/4	1/8	10
90734	1480x4x4	1/4	1/4	10
90730	1480x6	3/8	1/4	10
90731	1480x6x6	3/8	3/8	10
90732	1480x8	1/2	3/8	10
90738	1480x8x8	1/2	1/2	5
90829	1480x10x6	5/8	3/8	10
90733	1480x10	5/8	1/2	5

90° FEMALE ELBOW



PART No.	CROSS REFERENCE	TUBE DIA.	PIPE THREAD	QTY.
90709-1	—	1/4	1/4	5
90710	1470x6	3/8	1/4	5
90711	1470x6x6	3/8	3/8	5
90712	1470x8	1/2	3/8	5

MALE RUN TEE



PART No.	CROSS REFERENCE	O.D. LEFT	O.D. RIGHT	O.D. CENTER	PIPE THREAD	QTY.
90713	1471x4	1/4	—	1/4	1/8	5
90713-1	—	1/4	—	1/4	1/4	5
90715	1471x6x4x4	3/8	—	1/4	1/4	5
90714	1471x6	3/8	—	3/8	1/4	5
90716	1471x6x6x6	3/8	—	3/8	3/8	5
90717	1471x8	1/2	—	1/2	3/8	5

MALE BRANCH TEE



PART No.	CROSS REFERENCE	O.D. LEFT	O.D. RIGHT	O.D. CENTER	PIPE THREAD	QTY.
90719	1472x4	1/4	1/4	—	1/8	5
90719-1	—	1/4	1/4	—	1/4	5
90720	1472x6x6x2	3/8	3/8	—	1/8	5
90718	1472x6	3/8	3/8	—	1/4	5
90721	1472x6x6x6	3/8	3/8	—	3/8	5
90723	1472x8x4	1/2	1/2	—	1/4	5
90722	1472x8	1/2	1/2	—	3/8	5

MALE SWIVEL CONNECTOR



PART No.	CROSS REFERENCE	TUBE DIA.	PIPE THREAD	QTY.
90761	—	3/8	3/8	5
90762	—	1/2	3/8	5

45° MALE SWIVEL CONNECTOR



PART No.	CROSS REFERENCE	TUBE DIA.	PIPE THREAD	QTY.
90763	—	3/8	3/8	5
90764	—	1/2	3/8	5

BULKHEAD



PART No.	CROSS REFERENCE	TUBE DIA.	PIPE THREAD	QTY.
90797	50009	3/8	3/8	5
90796	50008	1/2	3/8	5

G3



AIR BRAKE PRODUCTS

(NOT DOT APPROVED) FITTINGS FOR TRANSMISSION AIR LINES

PUSH-TO-CONNECT FITTINGS

- Use with polyethylene/nylon and polyurethane (90 durometer and over) and soft metal tubing.
- Suitable for low temperature vacuum service.
- Temperature range: -40° F to 230° F

UNION



PART No.	CROSS REFERENCE	TUBE O.D.	PIPE SIZE	QTY.
91500	62PLN-2	1/8	—	5
91504	62PLN-5	5/16	—	5

UNION ELBOW



PART No.	CROSS REFERENCE	TUBE O.D.	PIPE THREAD	QTY.
91511	165PLN-2	1/8	—	5

G4

UNION TEE



PART No.	CROSS REFERENCE	TUBE O.D.	PIPE THREAD	QTY.
91505	164PLN-2	1/8	—	5

MALE ELBOW



PART No.	CROSS REFERENCE	TUBE O.D.	PIPE THREAD	QTY.
91531	W169PLN-2-2	1/8	1/8	5
91532	31295314	1/8	1/4	10

MALE CONNECTOR



PART No.	CROSS REFERENCE	TUBE O.D.	PIPE THREAD	QTY.
91517	W68PLN-2-2	1/8	1/8	5
91518	31755314	1/8	1/4	5
91520	W68PLP-5-2	5/16	1/8	5
91521	31750814	5/16	1/4	5

MALE ELBOW SWIVEL



PART No.	CROSS REFERENCE	TUBE O.D.	PIPE THREAD	QTY.
91531-1	W169PLN-2-2	1/8	1/8	5

FEMALE ELBOW



PART No.	CROSS REFERENCE	TUBE O.D.	PIPE THREAD	QTY.
91533	370GC-5/32-2	5/32	1/8	5

REDUCER



PART No.	CROSS REFERENCE	TUBE O.D. (A)	TUBE O.D. (B)	QTY.
91541	1109 x 2.5 x 4	5/32	1/4	5



(NOT DOT APPROVED) FITTINGS FOR TRANSMISSION AIR LINES

REPLACEMENT FITTINGS

- Primary applications: air control systems, instrumentation, water, air and lubrication lines
- Excellent vibration characteristics depend upon use of tubing.
- All fittings have split sleeves.
- Temperature range: -65° F to 250° F

NUT



PART No.	CROSS REFERENCE	TUBE O.D.	PIPE SIZE	QTY.
90885	281x2	1/8	—	10

SLEEVE



PART No.	CROSS REFERENCE	TUBE O.D.	PIPE SIZE	QTY.
90940	280x2	1/8	—	50

UNION



PART No.	CROSS REFERENCE	TUBE O.D.	PIPE SIZE	QTY.
90891	283x2	1/8	—	5

MALE CONNECTOR



PART No.	CROSS REFERENCE	TUBE O.D.	PIPE SIZE	QTY.
90908	282x2x1	1/8	1/16	5
90907	282x2	1/8	1/8	5

MALE ELBOW



PART No.	CROSS REFERENCE	TUBE O.D.	PIPE SIZE	QTY.
90922	284x2x1	1/8	1/16	5
90921	284x2	1/8	1/8	5

G5

(NOT DOT APPROVED) PUSH-TO-CONNECT FITTINGS

PUSH-TO-CONNECT FITTINGS

- Nickel-plated brass with preapplied sealant on the threads.
- Use with compressed air.
- Maximum working pressure: 260 psi

MALE RUN TEE



PART No.	CROSS REFERENCE	TUBE O.D.	PIPE SIZE	QTY.
91540	31035311	1/8	1/8	10

MALE BRANCH TEE



PART No.	CROSS REFERENCE	TUBE O.D.	PIPE SIZE	QTY.
91545	31085311	1/8	1/8	10



AIR BRAKE PRODUCTS

(DOT APPROVED) BRASS PUSH IN AIR BRAKE FITTINGS

BRASS PUSH IN AIR BRAKE FITTINGS

- Quick connect—simply push tubing in, no tools or loose parts to handle in tight places.
- Use on windows, door locks, mirrors, wipers, air operated seats, operating gauges, air horns, heater controls, gear shifts, fifth wheels and air brake connections.
- Full flow design provides up to 60% more flow area than conventional fittings with internal tube supports.

- Brass construction. Elbows and tees are forged brass.
- Swivel elbow and tees for ease of orientation.
- Pre-applied PTFE based pipe sealant on all male pipe threads.
- Temperature range: -40° F to 200° F
- Working pressure: 150 psi
- Applicable standard: FMVSS 571.106 and SAE J 1131



UNION



PART No.	CROSS REFERENCE	TUBE O.D.	THREAD	QTY.
91199	1862x2.5	5/32	—	5
91198	1862x3	3/16	—	5
91200	1862x4	1/4	—	5
91201	1862x6	3/8	—	5
91202	1862x8	1/2	—	5
91203	1862x10	5/8	—	2

QUICK CONNECT BULKHEAD UNION



PART No.	CROSS REFERENCE	TUBE O.D.	THREAD	QTY.
91260	1874x4x4	1/4	9/16-24	2
91261	1874x6x6	3/8	3/4-16	2
91262	1874x8x8	1/2	7/8-14	2

FEMALE BULKHEAD UNION



PART No.	CROSS REFERENCE	TUBE O.D.	THREAD	QTY.
91264	1873x4x4	1/4	1/4	2
91265	N/A	3/8	1/4	2
91266	1873x6x6	3/8	3/8	2
91267	1873x8x8	1/2	1/2	2

MALE CONNECTOR



PART No.	CROSS REFERENCE	TUBE O.D.	THREAD	QTY.
91215	—	1/8	1/16	5
91218	1868x2.5x1	5/32	1/16	5
91219	1868x2.5	5/32	1/8	5
91217	1868x3	3/16	1/8	5
91216	—	1/4	1/16	5
91220	1868x4	1/4	1/8	5
91221	1868x4x4	1/4	1/4	5
91222	1868x4x6	1/4	3/8	5
91263	1868x6x2	3/8	1/8	5
91223	1868x6	3/8	1/4	5
91224	1868x6x6	3/8	3/8	5
91225	1868x6x8	3/8	1/2	5
91226	1868x8x4	1/2	1/4	3
91227	1868x8	1/2	3/8	3
91228	1868x8x8	1/2	1/2	3
91270	1868x10x6	5/8	3/8	3
91271	1868x10	5/8	1/2	3

45° RIGID MALE ELBOW



PART No.	CROSS REFERENCE	TUBE O.D.	THREAD	QTY.
91247	1880x6x6	3/8	3/8	1
91244	1880x8	1/2	3/8	5
91245	1880x10x6	5/8	3/8	1
91246	1880x10	5/8	1/2	3

45° SWIVEL MALE ELBOW



PART No.	CROSS REFERENCE	TUBE O.D.	THREAD	QTY.
91241	1880x4x4S	1/4	1/4	3
91243	1880x6x2S	3/8	1/8	3
91242	1880x6S	3/8	1/4	3
91248	1880x8x8S	1/2	1/2	2

G6



(DOT APPROVED) BRASS PUSH IN AIR BRAKE FITTINGS

90° UNION ELBOW



PART No.	CROSS REFERENCE	TUBE O.D.	THREAD	QTY.
91205	1865x4	1/4	—	5
91206	1865x6	3/8	—	5
91207	1865x8	1/2	—	3

90° SWIVEL MALE ELBOW



PART No.	CROSS REFERENCE	TUBE O.D.	THREAD	QTY.
91230	1869x4S	1/4	1/8	5
91231	1869x4x4S	1/4	1/4	5
91232	1869x4x6S	1/4	3/8	5
91249	1869x6x2S	3/8	1/8	5
91233	1869x6S	3/8	1/4	5
91234	1869x6x6S	3/8	3/8	5
91235	1869x8S	1/2	3/8	3
91236	1869x8x8S	1/2	1/2	3
91238	1869x10S	5/8	1/2	3

90° MALE ELBOW



PART No.	CROSS REFERENCE	TUBE O.D.	THREAD	QTY.
91240	1869x2.5x1	5/32	1/16	5
91229	1869x2.5	5/32	1/8	5
91237	1869x3	3/16	1/8	5
91239	1869x6x2	3/8	1/8	5
91214	1869X6X6	3/8	3/8	5

90° FEMALE ELBOW



PART No.	CROSS REFERENCE	TUBE O.D.	THREAD	QTY.
91209	1870x4x4	1/4	1/4	5

UNION TEE



PART No.	CROSS REFERENCE	TUBE O.D.	THREAD	QTY.
91210	1864x4	1/4	—	5
91211	1864x6	3/8	—	5
91212	1864x8	1/2	—	3
91213	1864x10	5/8	—	5

SWIVEL MALE RUN TEE



PART No.	CROSS REFERENCE	TUBE O.D.	THREAD	QTY.
91250	1871x4S	1/4	1/8	3
91251	1871x4x4S	1/4	1/4	3
91252	1871x6S	3/8	1/4	3
91253	1871x6x6S	3/8	3/8	2
91254	1871x8S	1/2	3/8	2

SWIVEL MALE BRANCH TEE



PART No.	CROSS REFERENCE	TUBE O.D.	THREAD	QTY.
91255	1872x4S	1/4	1/8	5
91256	1872x4x4S	1/4	1/4	5
91257	1872x6S	3/8	1/4	3
91258	1872x6x6S	3/8	3/8	2
91259	1872x8S	1/2	3/8	2

SWIVEL FEMALE BRANCH TEE



PART No.	CROSS REFERENCE	TUBE O.D.	THREAD	QTY.
91274	1877x6	3/8	1/4	5

METRIC MALE CONNECTOR



PART No.	CROSS REFERENCE	TUBE O.D.	THREAD	QTY.
91470	68PMT-4-M12	1/4	M12-1.50	5

G7



AIR BRAKE PRODUCTS

(DOT APPROVED) LEGRIS® PUSH TO CONNECT FITTING SYSTEM

LEGRIS® DOT INSTANT FITTING SYSTEM

- Tube support design assures maximum flow.
- Compressed air applications and vacuum service.
- Glass filled nylon body with a Buna-N O-ring.
- Use with nylon, polyethylene, polyurethane, 85 and 95 durometer tubing.
- Legris fittings meet all applicable requirements of the DOT FMVSS 106 requirements.
- Legris fittings are designed for use on all pneumatic circuits other than air brake assemblies between the frame and axle.
- Final determination as to the use of this product in its application is the responsibility of the user's design engineering.
- Temperature range: -4° F to 175° F; working pressure (to 200 psi)



STRAIGHT MALE CONNECTOR



G8

PART No.	CROSS REFERENCE	TUBE O.D.	PIPE THREAD	QTY.
91810	31150411DOT	5/32	1/8	5
91811	31150414DOT	5/32	1/4	5
91812	31155511DOT	3/16	1/8	5
91813	31155514DOT	3/16	1/4	5
91814	31155611DOT	1/4	1/8	5
91815	31155614DOT	1/4	1/4	5
91816	31155618DOT	1/4	3/8	5
91817	31156011DOT	3/8	1/8	5
91818	31156014DOT	3/8	1/4	5
91819	31156018DOT	3/8	3/8	5
91820	31156022DOT	3/8	1/2	5
91821	31156214DOT	1/2	1/4	5
91822	31156218DOT	1/2	3/8	5
91823	31156222DOT	1/2	1/2	5

MALE ELBOW



PART No.	CROSS REFERENCE	TUBE O.D.	PIPE THREAD	QTY.
91830	31090411DOT	5/32	1/8	5
91831	31095511DOT	3/16	1/8	5
91832	31095611DOT	1/4	1/8	5
91833	31095614DOT	1/4	1/4	5
91834	31095618DOT	1/4	3/8	5
91835	31096014DOT	3/8	1/4	5
91836	31096018DOT	3/8	3/8	5
91837	31096022DOT	3/8	1/2	5
91838	31096214DOT	1/2	1/4	5
91839	31096218DOT	1/2	3/8	5
91840	31096222DOT	1/2	1/2	5

MALE BRANCH TEE



PART No.	CROSS REFERENCE	TUBE O.D.	PIPE THREAD	QTY.
91872	31085611DOT	1/4	1/8	5
91873	31085614DOT	1/4	1/4	5
91874	31085618DOT	1/4	3/8	5
91875	31086014DOT	3/8	1/4	5
91876	31086018DOT	3/8	3/8	5
91880	31086222DOT	1/2	1/2	5

MALE RUN TEE



PART No.	CROSS REFERENCE	TUBE O.D.	PIPE THREAD	QTY.
91892	31035611DOT	1/4	1/8	5
91893	31035614DOT	1/4	1/4	5
91895	31036014DOT	3/8	1/4	5
91896	31036018DOT	3/8	3/8	5
91897	31036022DOT	3/8	1/2	5



(DOT APPROVED) LEGRIS® PUSH TO CONNECT FITTING SYSTEM

STRAIGHT FEMALE CONNECTOR



PART No.	CROSS REFERENCE	TUBE O.D.	PIPE THREAD	QTY.
91929	31145611DOT	1/4	1/8	5
91930	31145614DOT	1/4	1/4	5
91931	31146014DOT	3/8	1/4	5
91932	31146018DOT	3/8	3/8	5

UNION ELBOW



PART No.	CROSS REFERENCE	TUBE O.D.	PIPE THREAD	QTY.
91918	31020400DOT	5/32	—	5
91919	31025500DOT	3/16	—	5
91920	31025600DOT	1/4	—	5
91921	31026000DOT	3/8	—	5
91922	31026200DOT	1/2	—	5

TUBE-TO-TUBE TEE



PART No.	CROSS REFERENCE	TUBE O.D.	PIPE THREAD	QTY.
91910	31040400DOT	5/32	—	5
91911	31045500DOT	3/16	—	5
91912	31045600DOT	1/4	—	5
91913	31046000DOT	3/8	—	5
91914	31046200DOT	1/2	—	5

TUBE-TO-TUBE UNION



PART No.	CROSS REFERENCE	TUBE O.D.	PIPE THREAD	QTY.
91800	31060400DOT	5/32	—	5
91801	31065500DOT	3/16	—	5
91802	31065600DOT	1/4	—	5
91803	31066000DOT	3/8	—	5
91804	31066200DOT	1/2	—	5

BULKHEAD UNION



PART No.	CROSS REFERENCE	TUBE O.D.	PIPE THREAD	QTY.
91824	31160400DOT	5/32	—	5
91825	31165600DOT	1/4	—	5
91826	31166000DOT	3/8	—	5

Y UNION



PART No.	CROSS REFERENCE	TUBE O.D.	PIPE THREAD	QTY.
91841	31400400DOT	5/32	—	5
91842	31405600DOT	1/4	—	5
91843	31406000DOT	3/8	—	5

Y CONNECTOR



PART No.	CROSS REFERENCE	TUBE O.D.	PIPE THREAD	QTY.
91847	31485611DOT	1/4	1/8	5
91848	31485614DOT	1/4	1/4	5

45° ELBOW TUBE TO PIPE



PART No.	CROSS REFERENCE	TUBE O.D.	PIPE THREAD	QTY.
91860	379PTC-10-6	5/8	3/8	5

G9



AIR BRAKE PRODUCTS

NYLON AIR BRAKE TUBING

NYLON AIR BRAKE TUBING

- Designed specifically for air brake applications, instrumentation and air accessory systems.
- Meets or exceeds SAE J844, Type A & B, and DOT FMVSS 49CFR 571, 106 requirements.
- Temperature range: -40° F to 200° F

PART No.	CROSS REFERENCE	HOSE O.D.	COLOR	WALL THICKNESS	MAXIMUM WORKING PRESSURE	MINIMUM BURST PRESSURE	MINIMUM BEND RADIUS	FEET
90744 ★	NT10002BK	1/8	Black	0.023	150	1,000	3/8	100
90758 ★	NT10002SBK	5/32	Black	0.032	150	1,200	1/2	50
90766	NT10003BK	3/16	Black	0.035	150	1,000	1"	100
90745	NT10004BK	1/4	Black	0.040	150	1,200	1"	100
90745-4	NT10004BK	1/4	Black	0.040	150	1,200	1"	500
90759	NT10005BK	5/16	Black	0.040	150	1,000	1-1/4	100
90746	NT10006BK	3/8	Black	0.062	150	1,400	1-1/2	100
90746-4	NT10006BK	3/8	Black	0.062	150	1,400	1-1/2	500
90747	NT10008BK	1/2	Black	0.062	150	950	2"	100
90747-4	NT10008BK	1/2	Black	0.062	150	950	2"	500
90748	NT10010BK	5/8	Black	0.092	150	900	2-1/2	100
90749	NT10012BK	3/4	Black	0.092	150	800	3"	100
90801 ★	NT10002SRD	5/32	Red	0.032	150	1,000	1"	50
90802	NT10004RD	1/4	Red	0.040	150	1,200	1"	100
90804	NT10006RD	3/8	Red	0.062	150	1,400	1-1/2	100
90804-4	NT10006RD	3/8	Red	0.062	150	1,400	1-1/2	500
90805	NT10008RD	1/2	Red	0.062	150	950	2"	100
90805-4	NT10008RD	1/2	Red	0.062	150	950	2"	500
90806	NT10010RD	5/8	Red	0.092	150	900	2-1/2	100
90856	NT10010RD	3/4	Red	0.092	150	800	3"	100
90812	NT10004BU	1/4	Blue	0.040	150	1,200	1"	100
90814	NT10006BU	3/8	Blue	0.062	150	1,400	1-1/2	100
90814-4	NT10006BU	3/8	Blue	0.062	150	1,400	1-1/2	500
90815	NT10008BU	1/2	Blue	0.062	150	950	2"	100
90822	NT10004GN	1/4	Green	0.040	150	1,200	1"	100
90824	NT10006GN	3/8	Green	0.062	150	1,400	1-1/2	100
90825	NT10008GN	1/2	Green	0.062	150	950	2"	100
90826	NT10010GN	5/8	Green	0.092	150	900	2-1/2	100
90832	NT10004YW	1/4	Yellow	0.040	150	1,200	1"	100
90834	NT10006YW	3/8	Yellow	0.062	150	1,400	1-1/2	100
90835	NT10008YW	1/2	Yellow	0.062	150	950	2"	100
90844	NT10006OR	3/8	Orange	0.062	150	1,400	1-1/2	100
90852	NT10004WH	1/4	White	0.040	150	1,200	1"	100
90854	NT10006WH	3/8	White	0.062	150	1,400	1-1/2	100

★ Insert not required.

★ Sizes 1/8 and 5/32 not listed in FMVSS 106.



Fittings for Nylon Tubing
can be found on pages
G1 – G3.

G10



Steve
Distribution Director

Expectations...

“We strive to not only meet but exceed your expectations in product quality, speed of delivery and service.”

The Imperial
Multi-Cutter, page I18, works
great for cutting Nylon Tubing.



NYLON AIR BRAKE RELEASE TOOL

TUBE RELEASE KIT

- Designed to ease the removal of tubing from all push-to-connect fittings.
- Manufactured of a sturdy engineering plastic.
- Use with push in air brake fittings



USE WITH PUSH IN AIR BRAKE FITTINGS

PART No.	QTY.
91190	1



AIR TANK DRAIN VALVES

AIR TANK DRAIN VALVES

- Conveniently drains air brake systems with a simple pull.
- Solid brass bleeder valve with remote cable screws into existing air systems.



PART No.	MALE PIPE THREAD	CABLE LENGTH	QTY.
90607	1/4	2'	4
90608	1/4	4'	4
90595	1/4	5'	4

HEAVY-DUTY ADJUSTABLE AIR TANK DRAIN VALVE

- All brass body with stainless steel spring.
- Steel cable with nylon coating, certified to 200 lb pull test.
- Low profile to minimize accidental hits and damages.
- Minimal fluid retention to reduce effect of freezing.



PART No.	DESCRIPTION	QTY.
90599	Drain Valve with 64" Cable and Crimp Ferrule	4
90597	Crimp Ferrule	25
90596	64" Cable	10

G11

STYLE	PART No.	DESCRIPTION	TEMPERATURE RANGE	TUBE O.D.	PIPE MALE	CROSS REF.	QTY.
	90540	External Seat Drain Cock	-65° F to 250° F	—	1/8	135	20
	90540-2			—	1/8	135	10
	90541			—	1/4	145	20
	90541-2			—	1/4	145	10
	90542			—	3/8	270	10
	90544			—	1/2	108	5
STYLE	PART No.	DESCRIPTION	TEMPERATURE RANGE	PIPE FEMALE	PIPE MALE	CROSS REF.	QTY.
	90591	Drain Cock	-30° F to 250° F	—	1/4	DCR601-4	5

See F12 - F14 for additional Drain Cocks.



Ed Buyer

Accurate...

"A mistake can cost customers time and money. And, in my mind, that's unacceptable."



AIR BRAKE PRODUCTS

(DOT APPROVED) AIR BRAKE FITTINGS FOR COPPER TUBING

DOT AIR BRAKE FITTINGS FOR COPPER TUBING

- Use with copper tubing in air brake systems air control, and gauge lines. These fittings may also be used with nylon air brake tubing by replacing long nut and spherical sleeve with insert, rigid sleeve and nut on page G1.
- Exceeds DOT pressure requirements for air brake systems.
- Meets SAE, DOT standards and MIL specifications.
- Fair resistance to vibration.
- Temperature range: -65° F to 250° F
- To assemble, turn 1-3/4 turns past hand tight for 1/4" and 3/8" size and 3-1/4 turns for 1/2", 3/8" and 3/4" sizes.



Tube O.D.	1/4	3/8	1/2	5/8	3/4
Thread Size	7/16-24	17/32-24	11/16-20	13/16-18	1"-18

SLEEVE



PART No.	CROSS REFERENCE	TUBE O.D.	PIPE THREAD	QTY.
90401	1360x4	1/4	—	50
90403	1360x6	3/8	—	50
90404	1360x8	1/2	—	50
90405	1360x10	5/8	—	20
90406	1360x12	3/4	—	20

NUT



PART No.	CROSS REFERENCE	TUBE O.D.	PIPE THREAD	QTY.
90408	1361x4	1/4	—	20
90410	1361x6	3/8	—	20
90411	1361x8	1/2	—	20
90412	1361x10	5/8	—	10
90413	1361x12	3/4	—	10

UNION TEE



PART No.	CROSS REFERENCE	TUBE O.D.	PIPE THREAD	QTY.
90426	1364x6	3/8	—	10
90428	1364x8	1/2	—	10

UNION



PART No.	CROSS REFERENCE	TUBE O.D.	PIPE THREAD	QTY.
90416	1362x4	1/4	—	10
90418	1362x6	3/8	—	10
90419	1362x8	1/2	—	10
90420	1362x10	5/8	—	6
90421	1362x12	3/4	—	6

UNION ELBOW



PART No.	CROSS REFERENCE	TUBE O.D.	PIPE THREAD	QTY.
90433	1365x8	1/2	—	5

FEMALE CONNECTOR



PART No.	CROSS REFERENCE	TUBE O.D.	PIPE THREAD	QTY.
90440	1366x6	3/8	1/4	5
90441	1366x6x6	3/8	3/8	5
90442	1366x8	1/2	3/8	5

MALE CONNECTOR



PART No.	CROSS REFERENCE	TUBE O.D.	PIPE THREAD	QTY.
90446	1368x4	1/4	1/8	10
90447	1368x4x4	1/4	1/4	10
90449	1368x6x2	3/8	1/8	10
90450	1368x6	3/8	1/4	10
90451	1368x6x6	3/8	3/8	10
90452	1368x6x8	3/8	1/2	10
90453	1368x8x4	1/2	1/4	10
90454	1368x8	1/2	3/8	10
90455	1368x8x8	1/2	1/2	10
90456	1368x10x6	5/8	3/8	6
90457	1368x10	5/8	1/2	6
90458	1368x12	3/4	1/2	6
90459	1368x12x12	3/4	3/4	6

G12



AIR BRAKE PRODUCTS

(DOT APPROVED) AIR BRAKE FITTINGS FOR COPPER TUBING

90° MALE ELBOW



PART No.	CROSS REFERENCE	TUBE O.D.	PIPE THREAD	QTY.
90461	1369x4	1/4	1/8	10
90462	1369x4x4	1/4	1/4	10
90464	1369x6x2	3/8	1/8	10
90465	1369x6	3/8	1/4	10
90466	1369x6x6	3/8	3/8	10
90467	1369x6x8	3/8	1/2	10
90468	1369x8x4	1/2	1/4	10
90469	1369x8	1/2	3/8	10
90470	1369x8x8	1/2	1/2	10
90471	1369x10	5/8	1/2	6
90471-1	1369x10x6	5/8	3/8	6

45° MALE ELBOW



PART No.	CROSS REFERENCE	TUBE O.D.	PIPE THREAD	QTY.
90551	1380x6	3/8	1/4	10
90552	1380x6x6	3/8	3/8	5
90553	1380x8	1/2	1/2	5
90554	1380x10	5/8	5/8	5

90° FEMALE ELBOW



PART No.	CROSS REFERENCE	TUBE O.D.	PIPE THREAD	QTY.
90478	1370x6	3/8	1/4	5
90480	1370x8	1/2	3/8	5

MALE RUN TEE



PART No.	CROSS REFERENCE	TUBE O.D.	PIPE THREAD	QTY.
90483	1371x6x6x6	3/8 x 3/8	3/8	5
90484	1371x6	3/8 x 3/8	1/4	5

MALE BRANCH TEE



PART No.	CROSS REFERENCE	TUBE O.D.	PIPE THREAD	QTY.
90489	1372x6x6x2	3/8 x 3/8	1/8	5
90490	1372x6	3/8 x 3/8	1/4	5
90491	1372x6x6x6	3/8 x 3/8	3/8	5
90492	1372x8	1/2 x 1/2	3/8	5

G13

COPPER TUBING

COPPER TUBING

- Seamless. Bright annealed.
- Meets all federal and ICC standards.
- Engineered for most applications, including refrigeration.

STANDARD

PART No.	O.D.	WALL GAUGE	FEET
75011	3/16	.030"	25'
75012	1/4	.030"	25'
75002	1/4	.030"	50'
75013	5/16	.032"	25'
75014	3/8	.032"	25'
75015	1/2	.032"	25'
75016	5/8	.035"	25'

HEAVY-DUTY

PART No.	O.D.	WALL GAUGE	FEET
75018	1/4	.035"	50'
75020	3/8	.049"	50'
75021	1/2	.049"	50'



NATIONAL DISTRIBUTOR OF QUALITY MAINTENANCE SUPPLIES SINCE 1958



AIR BRAKE PRODUCTS

(DOT APPROVED) RUBBER AIR BRAKE HOSE

RUBBER AIR BRAKE HOSE

- Premium quality air brake hose.
- Temperature range: -40° F to 200° F
- Meets or exceeds SAE J1402 A DOT All.
- Pennsylvania state approved.

CONSTRUCTION:

- » Inner tube: Synthetic EPDM
- » Reinforcement: Multi-fiber braid
- » Cover: Synthetic EPDM

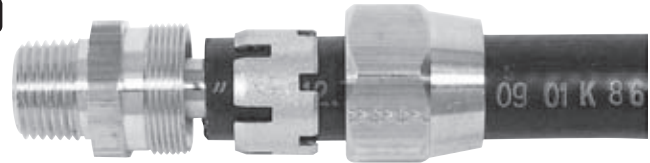


PART No.	CROSS REFERENCE	HOSE I.D.	HOSE O.D.	MAXIMUM WORKING PRESSURE	PROOF TEST PRESSURE	MINIMUM BURST PRESSURE	MINIMUM BEND RADIUS	FEET
90500	H33806	3/8	3/4	225 psi	200 psi	900 psi	3-1/2	100'
90500-1	H33806	3/8	3/4	225 psi	200 psi	900 psi	3-1/2	250'
90500-4	H33806	3/8	3/4	225 psi	200 psi	900 psi	3-1/2	500'
90505	H33808	1/2	7/8	225 psi	200 psi	900 psi	4"	50'
90505-1	H33808	1/2	7/8	225 psi	200 psi	900 psi	4"	250'

(DOT APPROVED) RUBBER AIR BRAKE HOSE ENDS

HOSE ENDS FOR RUBBER AIR BRAKE HOSE

- Can be used for nearly any air brake system line.
- Easy to assemble with a good selection of low cost hose end configurations.
- Brass material offers excellent resistance against corrosion.
- Exceeds pressure requirements of all truck air brake systems. Actual pressure is determined by maximum working pressure of hose size.



G14

NUT FOR SPRING GUARD



PART No.	CROSS REFERENCE	HOSE SIZE	MALE PIPE THREAD	QTY.
90517-1	33806D	3/8	—	5
90619	33808D	1/2	—	5

NUT FOR HOSE CONNECTOR



PART No.	CROSS REFERENCE	HOSE SIZE	MALE PIPE THREAD	QTY.
90510	33806B	3/8	—	10
90610	33808B	1/2	—	10

HOSE CONNECTOR SLEEVE



PART No.	CROSS REFERENCE	HOSE SIZE	MALE PIPE THREAD	QTY.
90511	33806A	3/8	—	20
90611	33808A	1/2	—	20

HOSE CONNECTOR



PART No.	CROSS REFERENCE	HOSE SIZE	MALE PIPE THREAD	QTY.
90512	33806B-Y24	3/8	1/4	5
90513	33806B-Y26	3/8	3/8	5
90514	33806B-Y28	3/8	1/2	5
90613	33808B-Y26	1/2	3/8	5
90614	33808B-Y28	1/2	1/2	5



CALL 1-800-558-2808 / FAX 1-800-553-8769 / WWW.IMPERIALSUPPLIES.COM

(DOT APPROVED) RUBBER AIR BRAKE HOSE ENDS

HOSE CONNECTOR WITH SPRING GUARD



PART No.	CROSS REFERENCE	HOSE SIZE	MALE PIPE THREAD	QTY.
90515	33806B-Y34	3/8	1/4	5
90516	33806B-Y36	3/8	3/8	5
90517	33806B-Y38	3/8	1/2	5
90616	33808B-Y36	1/2	3/8	5
90617	33808B-Y38	1/2	1/2	5

INSERT



PART No.	CROSS REFERENCE	HOSE SIZE	MALE PIPE THREAD	QTY.
90522	1391x6	3/8	1/4	5
90523	1391x6x6	3/8	3/8	5
90524	1391x6x8	3/8	1/2	5
90623	1391x8	1/2	3/8	5
90624	1391x8x8	1/2	1/2	5

SPRING / NUT ASSEMBLY



PART No.	CROSS REFERENCE	HOSE SIZE	MALE PIPE THREAD	QTY.
90584	—	3/8	—	5

SPRING GUARD



PART No.	CROSS REFERENCE	HOSE SIZE	MALE PIPE THREAD	QTY.
90518	33806-C	3/8	—	5
90618	33808-C	1/2	—	10

HOSE CONNECTOR WITH ADAPTER



PART No.	CROSS REFERENCE	HOSE SIZE	MALE PIPE THREAD	QTY.
90521	33806B-Y84	3/8	1/4	5
90488	33806B-Y86	3/8	3/8	5
90493	33808B-Y86	1/2	3/8	2

ADAPTER



PART No.	CROSS REFERENCE	HOSE SIZE	ABS THREAD	QTY.
90520	1390x6	1/4	3/4-20	5
90508	1390x6x6	3/8	3/4-20	5
90504	1390x6x8	1/2	3/4-20	5
90506	1390x8	3/8	7/8-20	5
90507	1390x8x8	1/2	7/8-20	5

HOSE MENDER



PART No.	CROSS REFERENCE	HOSE SIZE	MALE PIPE THREAD	QTY.
90438	33806B-Y06	3/8	—	5
90638	33808B-Y08	1/2	—	5

FEMALE SWIVEL



PART No.	CROSS REFERENCE	HOSE SIZE	ABS THREAD	QTY.
90519	33806B-Y76	3/8	3/4-20	5
90496	33808B-Y78	1/2	7/8-20	2

G15



AIR BRAKE PRODUCTS

(DOT APPROVED) RUBBER AIR BRAKE HOSE ENDS

RUBBER AIR BRAKE 338 SERIES CRIMP HOSE ENDS

- Brass material offers excellent resistance against corrosion.
- A permanent hose end saves time and is easy to assemble.
- **NOTE:** Use special collets—Part No. 3117 for 3/8" I.D. and No. 3118 for 1/2" I.D.

MALE PIPE RIGID



PART No.	CROSS REFERENCE	HOSE I. D.	PIPE SIZE	THREAD SIZE	QTY.
92680	33806P-104	3/8	1/4	1/4-18	5
92681	33806P-106	3/8	3/8	3/8-18	5
92682	33806P-108	3/8	1/2	1/2-14	5
92683	33808P-106	1/2	3/8	3/8-18	5
92684	33808P-108	1/2	1/2	1/2-14	5

MALE PIPE SWIVEL



PART No.	CROSS REFERENCE	HOSE I. D.	PIPE SIZE	THREAD SIZE	QTY.
92685	33806P-J06	3/8	3/8	3/8-18	5

(Swivel for installation purposes only)

FEMALE SWIVEL



PART No.	CROSS REFERENCE	HOSE I. D.	ABS SIZE	THREAD SIZE	QTY.
92686	33806P-Y76	3/8	3/8	3/4-20	5
92687	33808P-Y76	1/2	3/8	3/4-20	5
92688	33808P-Y78	1/2	1/2	7/8-20	5

SAE 45° FEMALE SWIVEL



PART No.	CROSS REFERENCE	HOSE I. D.	TUBE SIZE	THREAD SIZE	QTY.
92690	33808P-408	1/2	1/2	3/4-16	5

AIR BRAKE SLIDE LINE



PART No.	CROSS REFERENCE	HOSE I. D.	TUBE SIZE	THREAD SIZE	QTY.
92675	33806P-Y66	3/8	3/8	17/32-24	2

G16



*Ken
Senior Product Manager*

Preparation...

"To me, it's more than just quality parts. It's a quality team, that is well trained, with knowledge of both our products and our customers."

Cut costs by reducing your vendors. Imperial's Specialty Programs can help.



AIR BRAKE ASSEMBLIES

COILED NYLON AIR BRAKE TUBING ASSEMBLIES

- Resists road salt, gasoline, oil, deterioration, aging, heat, light and abrasion.
- Meets or exceeds DOT requirement FMVSS #106 and SAE J844D.
- Temperature range: -40° F to 200° F
- Connection: tractor to trailer



PART NO.	DESCRIPTION	MAXIMUM WORKING LENGTH	TRACTOR END LENGTH	TRAILER END LENGTH	PIPE THREAD	QTY.
90752	1 Red, 1 Blue	15'	12"	12"	1/2"	1 Pair
90752-1	1 Red	15'	12"	12"	1/2"	1 Coil
90752-2	1 Blue	15'	12"	12"	1/2"	1 Coil
90857	1 Red, 1 Blue	15'	48"	12"	1/2"	1 Pair
90857-1	1 Red	15'	48"	12"	1/2"	1 Coil
90857-2	1 Blue	15'	48"	12"	1/2"	1 Coil

STRAIGHT AIR BRAKE ASSEMBLY

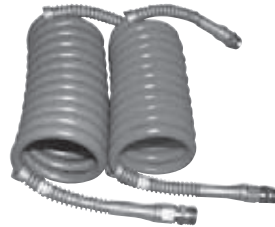
- Includes hose connectors with spring guards.
- Used for tractor to trailer hook ups, connected to glad hands.
- Rubber hose.
- DOT approved.



PART NO.	HOSE	MALE PIPE THREAD	LENGTH	QTY.
90757	3/8"	1/2"	12"	1
90774	3/8"	1/2"	15"	1

COILED AIR BRAKE ASSEMBLY

- Heavy spring guards to protect from kinking.
- Operating Range: -40° F to 200° F
- Working Pressure: 150 psi
- All male threads are 1/2" pipe thread.
- Meets or exceeds SAE J844.



PART NO.	COLOR	LEAD LENGTH	COIL LENGTH	QTY.
90836	Set	6"	8'	1 Pair

5TH WHEEL NYLON AIR LINE

- Coiled nylon hose.
- Extends up to 10'.
- Spring guards included.

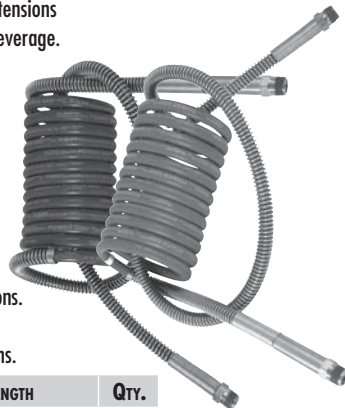
PART NO.	HOSE O.D.	NPTF FITTINGS	COIL LENGTH	QTY.
90773	1/4"	1/4-14	54'	1
90627	1/4"	1/4-14	60'	1



G17

PHILLIPS POLAR AIR® COILED AIR ASSEMBLIES

- Features POWER GRIP™ glad hand extensions for superior coupling and uncoupling leverage.
- Excellent recoil memory chemical and abrasion resistance.
- Large coil diameter prevents kinking, provides great recoil.
- Jacketing prevents fractures, provides durable, rubber feel.
- Remains flexible at -85°F.
- Three-Year Warranty.
- Meets SAE J844 and J1131 specifications.
- Meets FMVSS 571.106 specifications.
- Meets DOT 49 CFR 393.45 specifications.



PART NO.	DESCRIPTION	LENGTH	QTY.
90819	Air Brake Hose Set	15' with 12" lead	1
90819-1	Red – Emergency	15' with 12" lead	1
90819-2	Blue – Service	15' with 12" lead	1
90820	Air Brake Hose Set	15' with 40" lead	1
90820-1	Red – Emergency	15' with 40" lead	1
90820-2	Blue – Service	15' with 40" lead	1



Amy
Pricing Analyst

Conscientious...

"Imperial's employees make the difference. We are dedicated to going above and beyond for our customers."



AIR BRAKE PRODUCTS

AIR BRAKE HOSE AND ACCESSORIES

SINGLE SWIVEL AIR BRAKE HOSE ASSEMBLIES

- Meets or exceeds DOT FMVSS No. 106 - Brake Hoses, 49CFR571.106.
- Meets or exceeds SAE J1402 - Type A.
- UV and ozone resistant.
- 100% factory tested to ensure maximum quality.
- To convert one end of hose to 1/4" pipe, use Rubber Air Brake Adapter, Part No. 90520.
- Operating Temperature: -40° F to 200° F
- One 3/8" swivel adapter is included with single swivel assembly.
- Use with Hose Assembly Rack, Part No. 261, in Section O.
- 3/8" pipe adapter included.



PART No.	HOSE I.D.	HOSE LENGTH	SWIVEL END	FIXED END	PIPE ADAPTER INCLUDED	QTY.
91272	3/8	18"	3/8	3/8	3/8	2
91273	3/8	20"	3/8	3/8	3/8	2
91275	3/8	24"	3/8	3/8	3/8	2
91286	3/8	24"	1/4	1/4	3/8	1
91276	3/8	28"	3/8	3/8	3/8	2
91277	3/8	30"	3/8	3/8	3/8	2
91278	3/8	32"	3/8	3/8	3/8	2
91279	3/8	34"	3/8	3/8	3/8	2
91280	3/8	36"	3/8	3/8	3/8	2
91281	3/8	42"	3/8	3/8	3/8	2
91285	3/8	44"	3/8	3/8	3/8	2
91282	3/8	48"	3/8	3/8	3/8	2
91283	3/8	60"	3/8	3/8	3/8	2
91284	3/8	72"	3/8	3/8	3/8	2
91289	1/2	18"	3/8	3/8	3/8	2
91290	1/2	20"	3/8	3/8	3/8	2
91292	1/2	24"	3/8	3/8	3/8	2
91293	1/2	28"	3/8	3/8	3/8	2
91294	1/2	30"	3/8	3/8	3/8	2
91295	1/2	32"	3/8	3/8	3/8	2
91297	1/2	36"	3/8	3/8	3/8	2
91298	1/2	42"	3/8	3/8	3/8	2
91299	1/2	48"	3/8	3/8	3/8	2
91336	1/2	60"	3/8	3/8	3/8	2

DOUBLE SWIVEL AIR BRAKE HOSE ASSEMBLIES

- Meets or exceeds DOT FMVSS No. 106 - Brake Hoses, 49CFR571.106.
- Meets or exceeds SAE J1402 - Type A.
- UV and ozone resistant.
- Operating temperature: -40°F to 200°F
- Both ends swivel.
- Use with Hose Assembly Rack, Part No. 261, in Section O.



PART No.	HOSE I.D.	HOSE LENGTH	SWIVEL THREAD	SWIVEL THREAD	QTY.
91492	1/2	24"	3/8	3/8	2
91493	1/2	28"	3/8	3/8	2
91496	1/2	36"	3/8	3/8	2
91497	1/2	42"	3/8	3/8	2
91498	1/2	48"	3/8	3/8	2
91499	1/2	60"	3/8	3/8	2

AIR BRAKE HOSE ASSEMBLY WITH SPRINGS

- Meets or exceeds DOT FMVSS No. 106 - Brake Hoses, 49CFR571.106.
- Meets or exceeds SAE J1402 - Type A.
- UV and ozone resistant.
- Operating temperature: -40° F to 200° F
- Both ends are fixed.
- Threaded fixed end 1/2 with spring reinforced ends.



PART No.	HOSE I.D.	FIXED END	HOSE LENGTH	QTY.
91502	1/2	1/2	31"	1

G18

FIELD INSTALLATION AIR BRAKE ENDS

- Install air brake hose ends with the use of only a hex key.
- Repair air brake hoses, eliminating costly service calls and down time.
- Full DOT approval for use on air brake systems.
- Complete instructions included with each set.
- Male swivel hose ends.



PART No.	HOSE I.D.	MALE PIPE THREAD	QTY.
90509	3/8	3/8	2
90609	3/8	1/2	2
90905	1/2	3/8	2
90906	1/2	1/2	2



Allison
Dedicated Service Advisor

Attentive...

"What will I do to help a customer to get a part or solve a problem? It's, really simple. Whatever it takes."



HOSE AND TUBE ACCESSORIES

TENDER SPRING WITH COVER AND HARDWARE

- Heavy-duty black nylon cover and hose clamp.
- Use with two 3/8" air brake hoses and one 7-way ABS cord.
- Includes a carabiner.
- Spring size: 1" x 20"



PART NO.	CROSS REFERENCE	DESCRIPTION	QTY.
90861	17-148	Tender Spring with Cover	1
90861-4	17-148	Tender Spring with Cover	5
90864	17-160	Snap On Clip Replacement	10

PHILLIPS® TRACKER BAR DUAL SPRING KIT

- Dual 16" springs.
- Includes 3 ring clip.



PART NO.	CROSS REFERENCE	DESCRIPTION	QTY.
90887	17-420	Dual Tender Spring with Holder	1

TENDER SPRING WITH COVER AND HARDWARE

- Heavy-duty black nylon cover and 3-hose clamp.
- Use with two 3/8" air brake hoses and one 7-way ABS cord.
- Includes a carabiner.
- Spring size: 1" x 20"



PART NO.	CROSS REFERENCE	DESCRIPTION	QTY.
90865	17-1487	Tender Spring with Cover	1

TENDER SPRING WITH COVER AND HARDWARE

- Hardware includes: Heavy duty black nylon cover
- Use with (2) 3/8" air brake hoses and (1) 7 way ABS cord.
- Includes a carabiner.
- Spring Size: 1" x 20"



PART NO.	CROSS REFERENCE	DESCRIPTION	QTY.
90866	17-1487	Tender Spring with CVR-No Holder	1
90866-4	17-1487	Tender Spring with CVR-No Holder	4

Note: Order holders 90859, 90776 and 90860 separately, see G11.

HEAVY-DUTY CABLE SPRINGS

- Zinc plated for corrosion resistance.
- Double wire loop ends for extra strength.

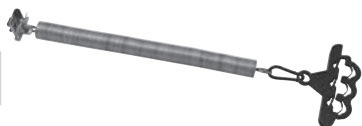
PART NO.	SIZE	QTY.
6030	3/4 x 13"	1
6082	1" x 13"	1
6083	1" x 16-1/4"	1
6031	1-1/8 x 28"	1



SLIDING AXLE TENDER SPRING KIT

- Use with two 3/8" air brake hoses and one 7-way ABS cord.
- Includes a carabiner.
- Spring Size: 1" x 16"

PART NO.	CROSS REFERENCE	QTY.
90867	17-183	1



TENDER SPRING COVER

- Cover for tender springs.
- Protects the spring from corrosion and dirt.



PART NO.	CROSS REFERENCE	QTY.
90862	17-144	5

HOSE SEPARATOR

- Used to separate rubber air brake hoses on trucks and trailers.
- Impact-resistant black plastic.

PART NO.	FOR HOSE I.D.	QTY.
90498	3/8 x 3/8	10
90498-4	3/8 x 3/8	100
90499	1/2 x 1/2	10
90598 ★	3/8 x 3/8	10



★ Flexible

PHILLIPS QWIK-SNAP™ 3-HOSE HOLDER

- Positive lock stays connected at over 80 lbs of pull force.
- Durable nylon for extreme weather, corrosion and impact resistance.
- Adjusts to accommodate one 1/2" and two 3/8" hoses.
- Change hoses in seconds.
- Comes with snap ring.
- No loose parts.



PART NO.	CROSS REFERENCE	QTY.
90811	17-153	1

FOUR HOSE HOLDER

- Holds two air brake lines, one seven-way cord and one ISO cord.
- Has four 3/4" holes.



PART NO.	HOLES	QTY.
90859	(4) 3/4"	1

HEAVY-DUTY SUPPORT CLAMP

- Rubber clamp halves with steel reinforcement.
- Three-hole design with outside holes supporting the air lines and center hole supporting the electrical cord or ABS trailer cable.
- Includes a U-bolt with attached eye bolt for easy mounting.
- Holds 3/8" hoses or 1/2" O.D. spring guard protected air cords.
- The center hole is for any 7 conductor or ABS trailer cable.

PART NO.	HOLES	QTY.
90776	3	1
90860	2	1



G19



AIR BRAKE PRODUCTS

GLAD HANDS SEALS & ACCESSORIES

POLYURETHANE GLAD HAND SEALS – SOFT DUROMETER

- Won't dry out, softer material.
- Impervious to ozone, acids, road salts, oils, smog and other contaminants.
- Color coordinated for red and blue air lines.

PART No.	COLOR	LIP	QTY.
90634	Red	1-1/4	25
90635	Blue	1-1/4	25
90636	Black	1-1/4	25



Partial face type seal

POLYURETHANE GLAD HAND SEALS – MEDIUM DUROMETER

- Won't dry out, slightly harder than soft style.
- Impervious to ozone, acids, road salts, oils, smog and other contaminants.
- Color coordinated for red and blue air lines.

PART No.	COLOR	LIP	QTY.
90474	Red	1-1/4	25
90475	Blue	1-1/4	25
90476	Black	1-1/4	25



Partial face type seal

POLYURETHANE GLAD HAND SEALS – MEDIUM DUROMETER

- Won't dry out, slightly harder than soft style.
- Impervious to ozone, acids, road salts, oils, smog and other contaminants.
- Color coordinated for red and blue air lines.

PART No.	COLOR	LIP	QTY.
90477	Red	1-1/2	25
90479	Blue	1-1/2	25
90481	Black	1-1/2	25



Full face type seal

RUBBER GLAD HAND SEALS

- Rubber seal used with red, blue, or universal glad hands.

PART No.	DESCRIPTION	QTY.
90630	Rubber seal, black	25
90631	Rubber seal, black	25
90631-4	Rubber seal, black	100



Compression type, #90630



Full face type seal, #90631

CLOSED FACED RUBBER GLAD HAND SEAL

- Black rubber.
- Closed face.

PART No.	QTY.
90463	25



CLOSED FACE POLYURETHANE GLAD HAND SEAL

- Material: Polyurethane
- Color: Gray

PART No.	QTY.
90870	25



G20

GLAD HAND SEAL TOOL

- For installing new or removing old glad hand seals.

PART No.	QTY.
90813	1



STAINLESS STEEL GLAD HAND FILTER

- Eliminates particles from getting into the air-line system.

PART No.	DESCRIPTION	QTY.
90807	Stainless Steel Filter	10



GLAD HAND STOWAWAY (DUAL)

- Patented 45° design for ease of use.
- Storage for both glad hands and electrical plugs.
- Made of impact-resistant plastic.

PART No.	QTY.
73131	1



GLAD HAND STOWAWAY (SINGLE)

- Holds an electrical plug and (2) glad hands.
- Made of impact-resistant plastic.

PART No.	QTY.
73144	1



Imperial continuously adds new products.



GLAD HANDS

GLAD HANDS WITH POLYURETHANE SEALS

- 1/2" NPT female port.
- Cast aluminum.

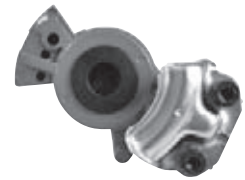
PART No.	DESCRIPTION	FEMALE PORT	QTY.
90753	Blue - Service	1/2 NPT	2
90754	Red - Emergency	1/2 NPT	2



GLAD HAND WITH BLACK POLYURETHANE SEAL

- Comes with black polyurethane seal, partial faced, soft durometer.
- Stainless steel plate.
- Electroplated red or blue.

PART No.	DESCRIPTION	FEMALE PORT	QTY.
90817	Blue - Service	1/2 NPT	2
90818	Red - Emergency	1/2 NPT	2



GLAD HANDS WITH FULL FACE BLACK RUBBER SEALS

- Universal; couples with emergency, service and universal couplings.
- Cast aluminum threads.

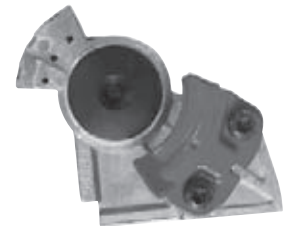
PART No.	DESCRIPTION	FEMALE THREAD	QTY.
90625	Red - Emergency	1/2 NPT	2
90626	Blue - Service	1/2 NPT	2
90628	Universal	1/2 NPT	2



BRACKET STYLE GLAD HANDS FOR TRAILERS

- Shipped both ports open and plugs loose for customer adaptation as needed.
- Cast aluminum threads.
- Emergency and service assemblies.
- For trailer use/40° style.
- Full face black rubber seals.

PART No.	DESCRIPTION	FEMALE THREAD	STYLE	QTY.
90621	Red - Emergency	3/8-18	Bracket	1
90622	Blue - Service	3/8-18	Bracket	1



POWDER COATED GLAD HANDS WITH FULL FACE POLY SEAL AND FILTER

- Tough powder coating for corrosion resistance.
- Stainless steel clamp and wear plates eliminate corrosion.
- Full-face black polyurethane seal for long service life.
- Includes stainless steel filter.
- 1/2" female port.

PART No.	DESCRIPTION	FEMALE PORT	QTY.
90808	Red - Emergency	1/2 NPT	2
90809	Blue - Service	1/2 NPT	2



SHUT-OFF STYLE GLAD HANDS

- Includes standard rubber glad hand seals.
- Full face black rubber seals.

PART No.	DESCRIPTION	NPTF PORT	QTY.
90751	Blue - Service	3/8-18	1
90772	Red - Emergency	3/8-18	1



UNIVERSAL IRON GLAD HANDS

- Positive spring loaded locking mechanism keeps glad hand properly positioned.
- Meets all applicable requirements of SAE J318, including breakaway requirement.
- Solid, one-piece construction.
- Tighter fit, better cost per mile.
- Black polyurethane seal.

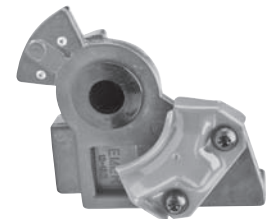
PART No.	DESCRIPTION	FEMALE PORT	QTY.
90750	Universal - Black	1/2 NPT	2
90750-4	Universal - Black	1/2 NPT	25



CORROSION-RESISTANT GLAD HAND

- Anodized for protection against magnesium chloride, road salt and chemicals.
- Wrap around connector plate provides additional strength.
- Powder-coated connector plate and E-coated screws.
- Zinc coated detente plates.
- Polyurethane seal.
- Meets SAE J318 specification.

PART No.	DESCRIPTION	MOUNT	PORT	QTY.
90828	Blue - Service	Trailer	3/8-18	1
90827	Red - Emergency	Trailer	3/8-18	1



Visit the Imperial website.
www.imperialsupplies.com

G21

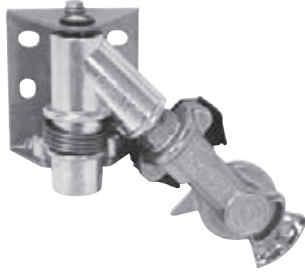


AIR BRAKE PRODUCTS

GLAD HANDS & ACCESSORIES

SWINGER GLAD HAND

- Designed for intermodal and piggy back trailers where straight or angled glad hands are exposed to damage.
- Glad hand swivels 180° without kinking the air line.
- Inner seal prevents dirt and insects from entering the air brake system.
- When not in use, the glad hand automatically returns to the seal, protecting the air lines.
- Cast iron service.
- Stainless steel return spring for long life.



PART No.	DESCRIPTION	PORT	QTY.
90830	Blue - Service	3/8	1
90831	Red - Emergency	3/8	1

DUMMY GLAD HAND

- Constructed of a die cast aluminum with stainless steel wear plates.
- Comes with an 18" security cable.
- Has a standard rubber seal.



PART No.	QTY.
90800	1

AIR LINE GLAD-GRIP

- Reduces air line kinks at the glad hand connection.
- Quick and easy installation between the glad hand and air line.
- Durable plastic with plated steel coupling.
- Package includes one red and one blue grip with hardware.



PART No.	SIZE	QTY.
90643	1/2 NPT	1 pair

GLAD HAND LOCK

- Discourages trailer moving by locking to the emergency side glad hand on the trailer.
- Fits all styles of glad hands.
- Includes two keys.



PART No.	STYLE	QTY.
90769	Not Keyed Alike	1
790	Keyed Alike	1

AIR BRAKE DIAPHRAGMS

- Popular 8" size.
- Clamp ring style.



PART No.	SIZE	TYPE	QTY.
90605	7-59/64	30	2
90605-4	7-59/64	30	10

METAL GLAD HAND LOCK

- Cast aluminum for added strength.
- Includes two keys.
- Fits all styles of glad hands.
- Used on the emergency side glad hand on the trailer, to prevent unintentional movement of the trailer during loading, unloading or service.



PART No.	STYLE	QTY.
90821	Keyed Alike	1

G22



*Scott
Dedicated Service Advisor*

Diligent...

"My customers want it all. And I don't blame them. It's all about delivering real value."

**Imperial
continuously
adds new
products.**



CALL 1-800-558-2808 / FAX 1-800-553-8769 / WWW.IMPERIALSUPPLIES.COM