

Instruction Guide

for the

SCANTEL[®] CS 1504

Hummingbird[™]

SCANNER



IMPERIAL SUPPLIES LLC

P.O. Box 11008, Green Bay, WI 54307-1008
1-800-558-2808 • Fax 1-800-553-8769 • www.imperialsupplies.com

P.O. Box 11008, Green Bay, WI 54307-1008

1-800-558-2808 • Fax 1-800-553-8769 • www.imperialsupplies.com

Getting Started

• Unpacking the scanner

The scanner is shipped in a single box containing:

- ScanTel® Hummingbird™ CS 1504 Scanner
- Communication cable
- Four batteries
- WebPush application disk
- Guide to the ScanTel® Hummingbird™ CS 1504 Scanner
- Scanner agreement
- Warranty card

Features

Designed to fit in the palm of your hand, this scanner can store up to 150 items in memory. The ScanTel® Hummingbird™ CS 1504 uses a Scan Button and Delete Button which scan and delete items from the scanner. Simply point and scan!



Trouble Shooting

Problem	Possible Cause	Possible Solution
• The scanner is not working	<ul style="list-style-type: none"> • Batteries are loaded incorrectly. • Batteries are dead. • Hardware failure. 	<ul style="list-style-type: none"> • Reload batteries. Make sure the (+) and the (-) signs on the batteries line up with the signs inside of the battery cover. • Insert new batteries. • Call Imperial Supplies LLC at 1-800-558-2808.
• The scanner is not scanning or deleting items.	<ul style="list-style-type: none"> • The barcode may be damaged. • You are too far from or too close to the barcode. • You are scanning at an incorrect angle. • You are scanning an unsupported or disabled barcode type or that barcode type may be disabled in the software. • The scanner is connected to the PC and communication has been established. • Memory is full. 	<ul style="list-style-type: none"> • Try a different barcode. • Move the scanner closer to or farther from the barcode. • Change the angle until the scanner reads the barcode. • Try a different barcode. Make sure the correct barcode support is enabled. • Scanner will not scan when the communication cable is connected to the scanner and a host communications session has been started. Disconnect the cable and try again. • This situation is indicated by the red indicator steadily lit and the scanner emitting a series of continuous long beeps. Upload the scanner data to your application or press and hold the Delete Button for 6 seconds to clear the scanner's memory. Caution: all data will be lost by performing this function.
• Stored barcode information is not transferring to the PC.	<ul style="list-style-type: none"> • The communication cable is not connected properly. • The communication software is not properly loaded or is corrupt. • The PC serial port is not properly configured. 	<ul style="list-style-type: none"> • Check that the cable is properly connected to the scanner and the PC. • Check that the communication software is loaded properly on your PC. If necessary, reload the communication software on the PC. • Consult your computer support office.
• LED indicator blinks red.	• Low battery	• Replace batteries.
• LED indicator flashes red, green and amber	• Hardware failure.	• Call Imperial Supplies at 1-800-558-2808.

Ordering

- 1). Scan your order into the ScanTel® Hummingbird™ CS 1504 scanner.
- 2). Be sure you are connected to the Internet using Dial-up networking if necessary. If you have a dedicated Internet connection, this is always true.
- 3). Make sure your ScanTel® Hummingbird™ CS 1504 scanner communication cable is connected to your computer.
- 4). Under the Options make sure to select proper scanner model: ScanTel® Hummingbird™ CS 15xx.
- 5). Start the WebPush application. The program installed by default under Start Menu/Programs/WebPush/impush.
- 6). Follow the directions in the WebPush application. They will walk you through the process of scanning your order to Imperial.
- 7). When you receive a link to your order, click it to review the order in your web browser.
- 8). Be SURE to “check out” your order on the web. Imperial will NOT process your order until you “check out”!
- 9). After clicking the link for your order, review it on the web site. You must be sure to maintain the order and then check it out.
- 10). Done! Your order will be packed and shipped as soon as possible after check out.

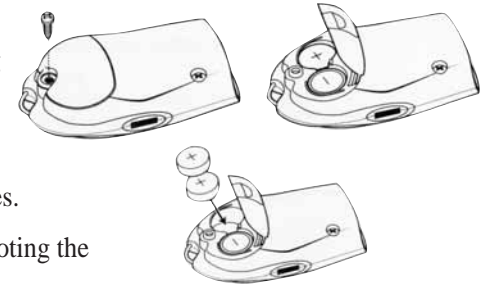
*Should you experience any problems or questions,
please contact Imperial's Customer Service Department.*

1-800-558-2808

Replacing the Batteries

When it is necessary to replace the batteries:

1. Remove screw securing the battery cover.
2. Lift battery cover.
3. Remove the old batteries.
4. Insert 4 new batteries noting the polarity.
5. Close battery cover and replace screw.



Low Battery Warning

The ScanTel® Hummingbird™ CS 1504 will indicate a low power state to the user by blinking the LED indicator red while trying to scan a barcode.

Audio Control

To toggle the beeper tone on or off, press and hold the large button for 10 seconds until the LED indicator turns solid amber (beeper tone off) or until the LED turns solid amber and a double tone is heard (beeper tone on).

Cleaning

Clean the ScanTel® Hummingbird™ CS 1504 with a soft, clean cloth. Do NOT use any solvent such as alcohol or any abrasive substances.

Scanner Instructions

1. Scan Barcodes (Add Items to Memory)

Aim the scanner at a barcode. Press and hold the Scan Button until you hear a beep and the blinking green LED turns solid green. To order more than one box scan barcode again.

2. Delete Barcodes (Remove an Item from Memory)

To delete a single item, aim the scanner at a barcode. Press and hold the Delete Button until you hear a beep and the blinking amber LED turns solid amber.

3. Clear the Memory (Remove All Items from Memory)

Use the Delete Button to clear the ScanTel® Hummingbird™ CS 1504 memory of all stored items. Aim the scanner away from any barcodes. Press and hold the Delete Button for 6 seconds, until you hear a long unique beep tone.

4. Connecting the Scanner to your Computer

To connect the communication cable to the computer:

1. Connect the 9-pin cable connector on the communication cable into an open COM port on your computer. Some computers require a 9- to 25-pin adapter to make this connection. If 9-pin adapter is needed, please contact Imperial Supplies LLC.
2. Holding the other end of the communication cable with the arrow facing up, slide the connector into the data communication jack on the side of the scanner.

5. Send Collected Barcode Data to the Computer

To transfer barcode data from the ScanTel® Hummingbird™ CS 1504 to the computer:

1. Make sure the cable connection between the ScanTel® Hummingbird™ CS 1504 Scanner and the computer is secure.
2. Use your Imperial WebPush software to upload stored data from the ScanTel® Hummingbird™ CS 1504 to your computer. When communications starts, the green LED blinks and the scanner beeps.
3. Please see page 6 for more ordering instructions.

WebPush Instructions

Software Requirements

- IBM PC or compatible with 32 MB RAM minimum.
- Windows 95, 98, NT, 2000, or XP.
- Internet Explorer ActiveX control must be available on the PC.
- One free serial COM port, COM1 – COM4.
- 1 MB of free hard disk space.
- HTTP Internet access from the installation PC
- If a firewall or proxy server is used for Internet access (see your network administrator), you will need support from your MIS help desk to properly configure the application. Imperial is not capable of supporting setup of proxy access to the Internet.

Installation:

- 1). Connect the serial data transfer cable to your PC. There are usually one or two ports on the back of the unit that can be connected to the 9-pin end of the cable. If possible, note the COM port # of the port. If there is no number, you can usually assume a single port is COM 1. With two ports, the one closest to the computer power supply is usually COM 1.
- 2). Install the WebPush application on your PC.
- 3). When prompted at the end of installation, select the checkbox for “Run the program now”.
- 4). There is a setup dialog box available from the File Menu, Options. In this dialog you can select your COM port that the scanner is connected to, and enter any proxy information you may need to connect to the Internet. You can also enter your Imperial web site login information if you don't want to type it in when clicking a link in the program.